

SHENZHEN CHAINWAY INFORMATION TECHNOLOGY CO., LTD

Desktop UHF Reader

R3S User Manual



Statement

2013 by ShenZhen Chainway Information Technology Co., Ltd. All rights reserved.

No part of this publication may be reproduced or used in any form, or by any electrical or mechanical means, without permission written from Chainway. This includes electronic or mechanical means, such as photocopying, recording, or information storage and retrieval systems. The material in this manual is subject to change without notice. The software is provided strictly on an “as is” basis. All software, including firmware, furnished to the user is on a licensed basis. Chainway grants to the user a non-transferable and non-exclusive license to use each software or firmware program delivered hereunder (licensed program). Except as noted below, such license may not be assigned, sublicensed, or otherwise transferred by the user without prior written consent of Chainway. No right to copy a licensed program in whole or in part is granted, except as permitted under copyright law. The user shall not modify, merge, or incorporate any form or portion of a licensed program with other program material, create a derivative work from a licensed program, or use a licensed program in a network without written permission from Chainway. Chainway reserves the right to make changes to any software or product to improve reliability, function, or design. Chainway does not assume any product liability arising out of, or in connection with, the application or use of any product, circuit, or application described herein.

No license is granted, either expressly or by implication, estoppel, or otherwise under any Chainway intellectual property rights. An implied license only exists for equipment, circuits, and subsystems contained in Chainway products.

Catalogue

Statement.....	1
Appearance.....	5
Chapter 1 Connection	7
Chapter 2 Read EPC.....	8
2.1 Start Reading EPC	8
2.2 Filter	9
Chapter 3 Read and Write Tag.....	10
3.1 Read Tag.....	10
3.2 Write Tags	10
3.3 Filter	10
Chapter 4 Lock and Kill Tag.....	12
4.1 Lock Tag.....	12
4.2 Kill Tag.....	12
4.3 Filter	13
Chapter 5 Setup	14
5.1 Output Power.....	14
5.2 Region	14
5.3 Protocol	16
5.4 RFLink	17
5.5 Inventory Mode	18
5.6 Tag Focus.....	19
5.7 Fast ID.....	20
5.8 Buzzer	21
6. UHF Info.....	22
7. Temperature.....	23

Appearance

Standard version:



Available ports:



1. USB-type C



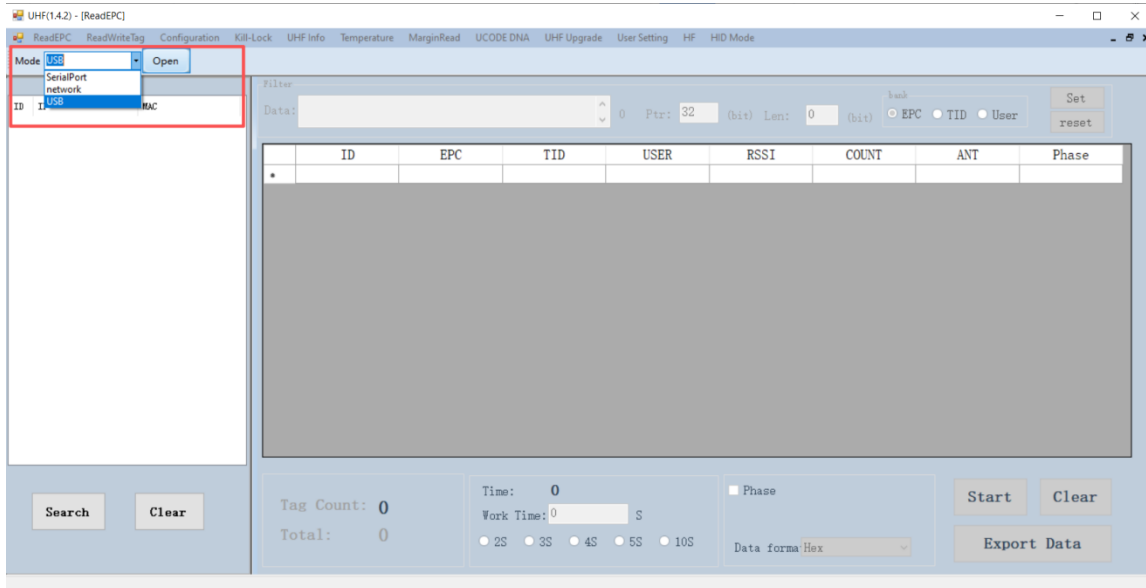
2. DC adapter



3. RJ45 port

Chapter 1 Connection

Open software in your PC, select USB in Mode, connect R3S through USB line, after driver has finished installation, click “Open” as Pic.1-1.



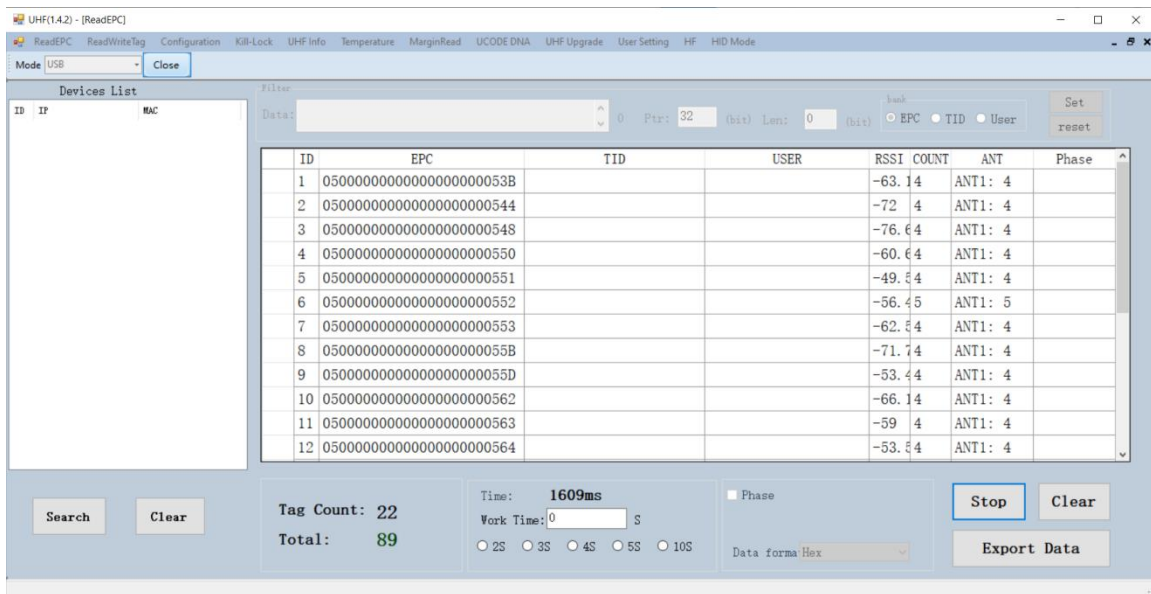
Pic 1-1

Chapter 2 Read EPC

Select ReadEPC on top of navigation bar.

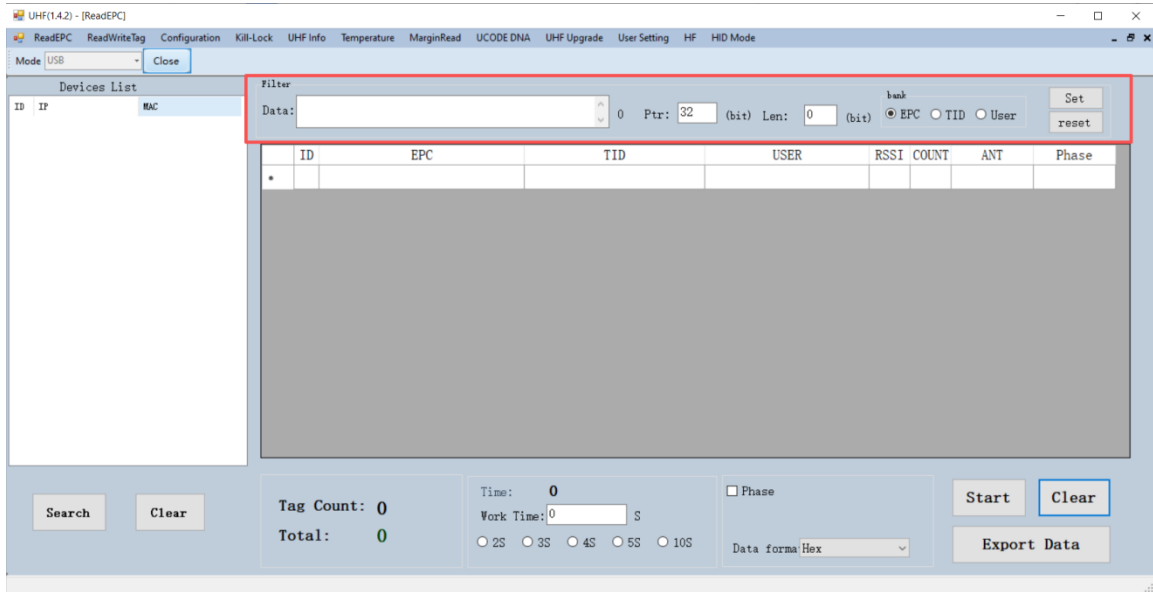
2.1 Start Reading EPC

Click “Start” to read EPC, EPC, TID, Rssi and Count data will show up in blank area in Pic.2-1. Click “Stop” to stop EPC reading.



2.2 Filter

Filter function can be selected to filter tag that has been read, including start address(Ptr), length. EPC, TID, USER areas can be selected. Click “Save” to save current parameters, click “Reset” to reset module to default. As Pic.2-2.



Chapter 3 Read and Write Tag

3.1 Read Tag

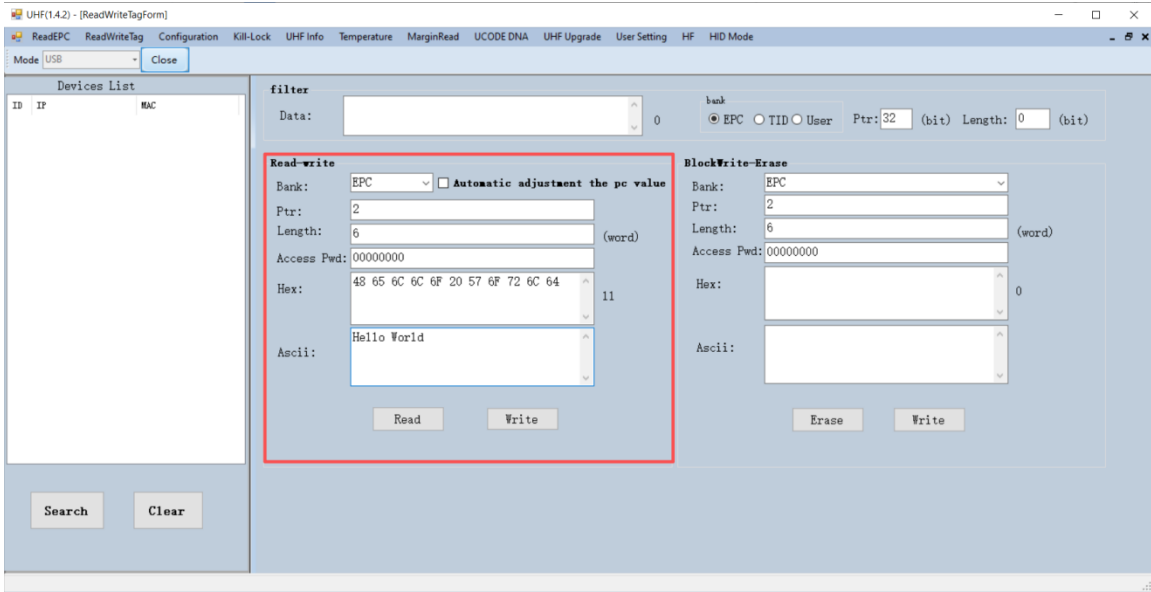
RESERVED, EPC, TID and USER areas can be selected to read data in each area and start address(Ptr) and data length(Len) can be adjusted. Default access password is 00000000, click “Read” to read data as Pic.3-1.

3.2 Write Tags

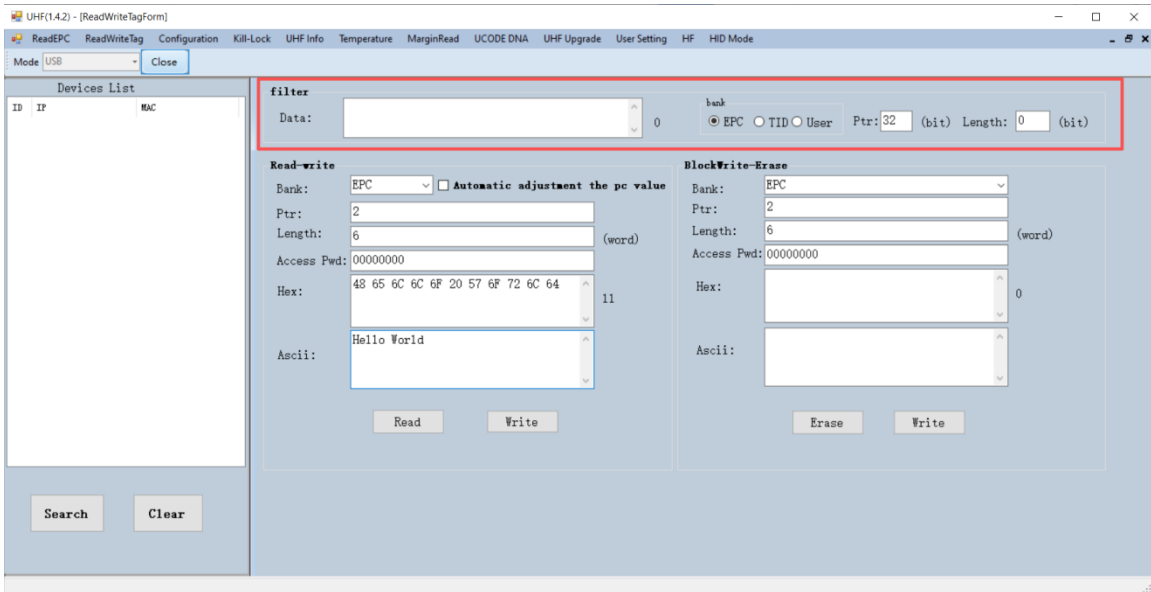
There are four block areas for each tag (RESERVED, EPC, TID and USER), user could setup start address(Ptr) and data length(Len), input default access password 00000000 and hex value, then click “Write” to write data as Pic.3-1.

3.3 Filter

User could setup parameters in “Filter” to filter start address, data length and data of tags in EPC, TID and USER areas as Pic.3-2.



Pic.3-1

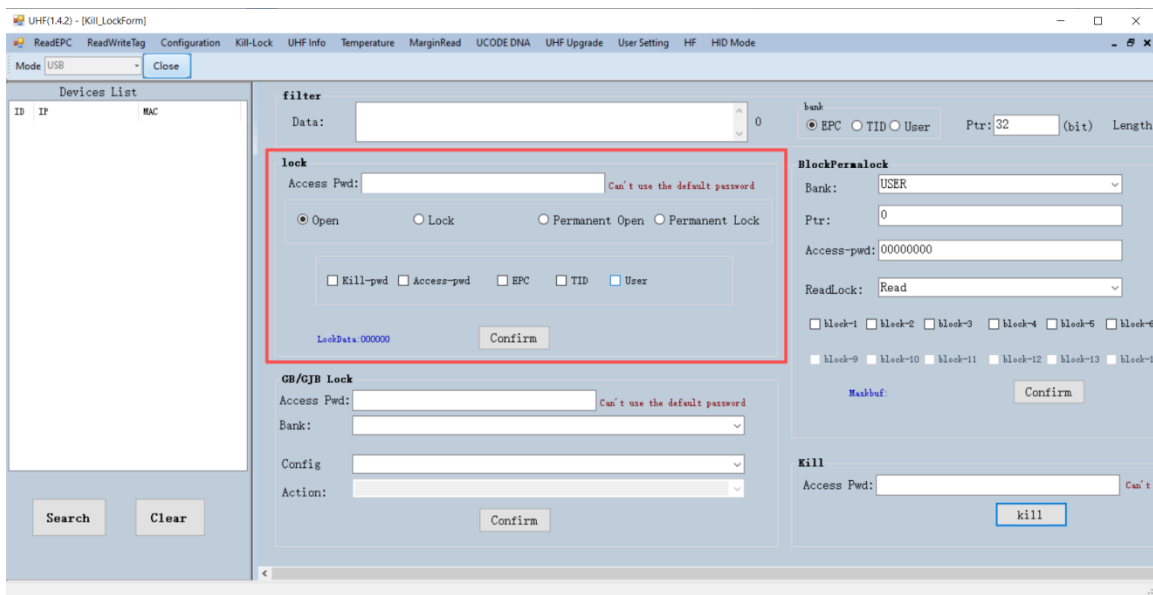


Pic.3-2

Chapter 4 Lock and Kill Tag

4.1 Lock Tag

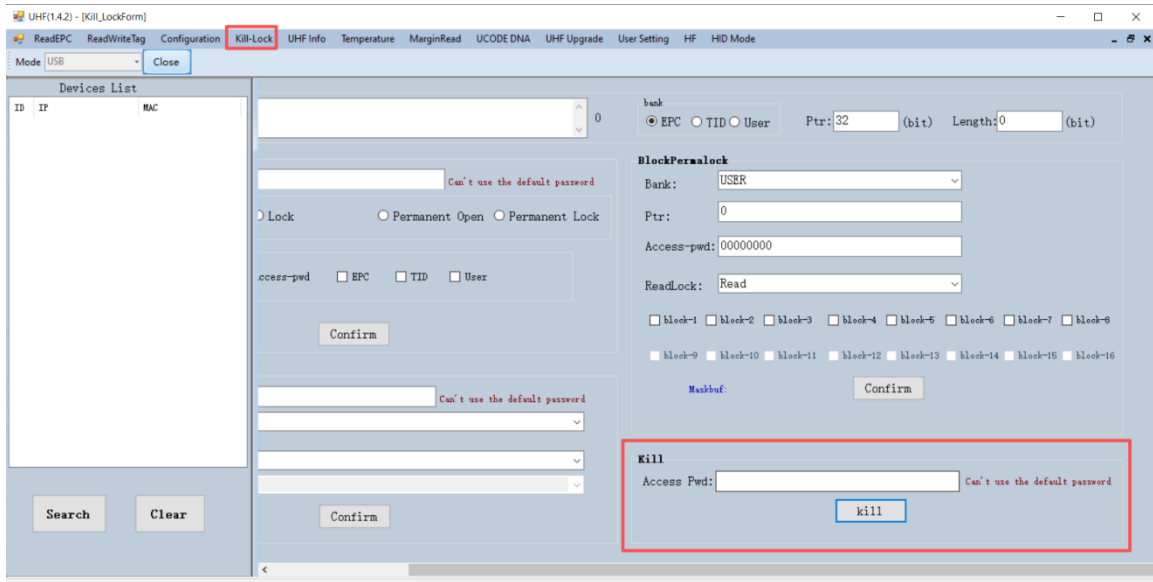
Enter access password of tag, and select options that need to be locked such as “Open”, “Lock”, “Permanent Open” and “Permanent Lock”, then select areas, click “Confirm” to lock tag as Pic.4-1.



Pic.4-1

4.2 Kill Tag

Enter access password of tag and click “Kill” button to destroy tag as Pic.4-3.



Pic.4-3

4.3 Filter

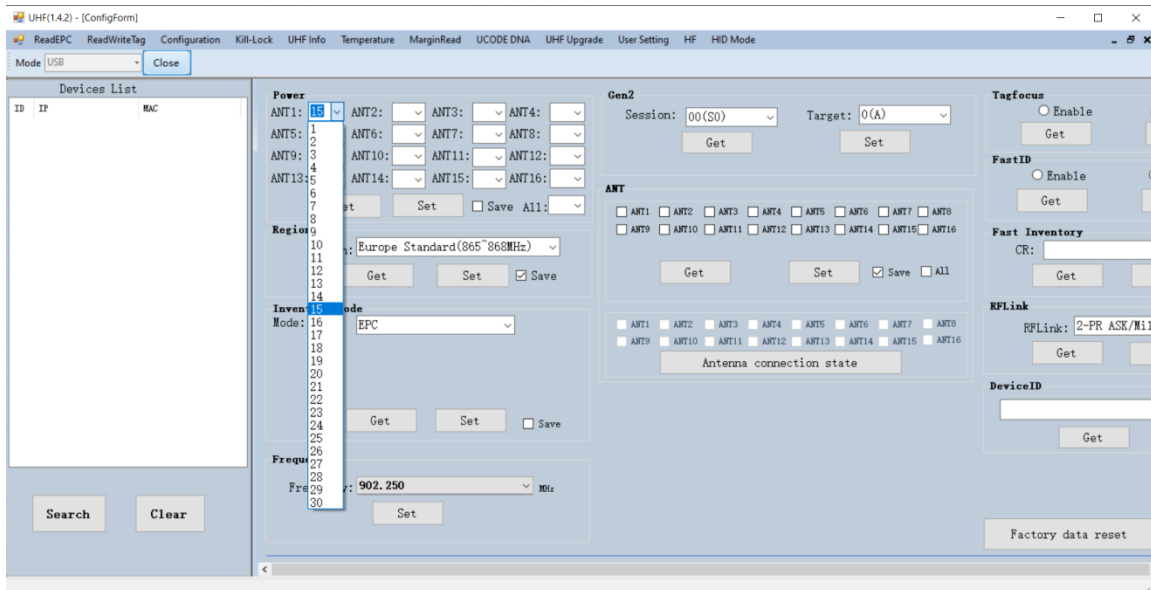
User could setup parameters to filter start address, data length and data for tags which locked and killed. Select EPC, TID and USER areas and setup length to 0 then clean data to disable filter.

Chapter 5 Setup

Click “Configuration” on top of navigation bar to enter setup.

5.1 Output Power

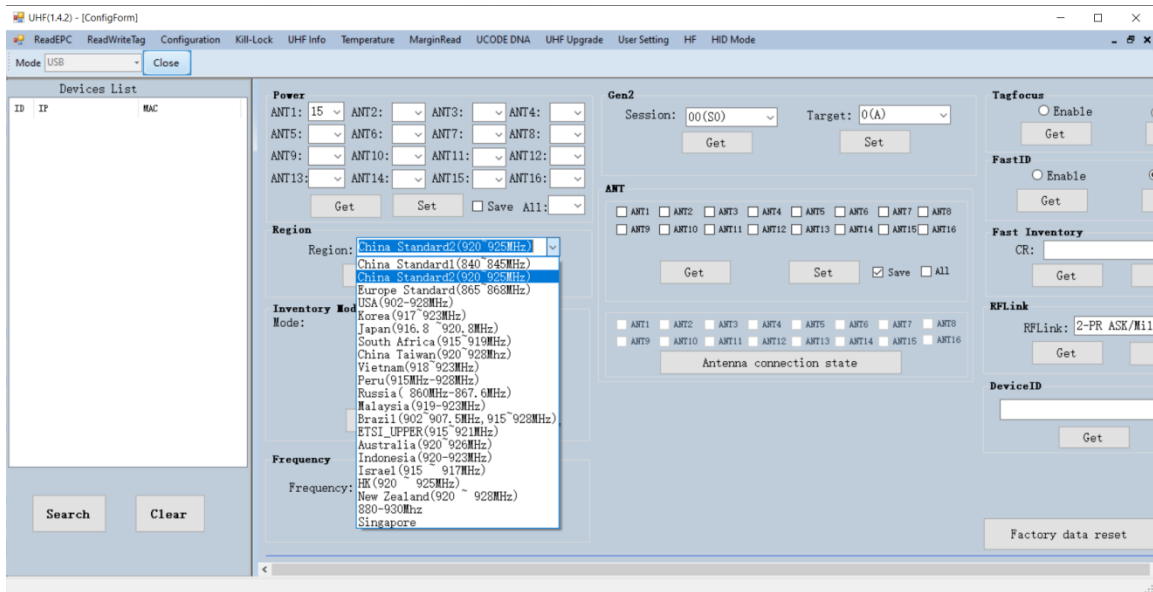
Output power can be adjusted from 5-30dBm, click “Set” to confirm power point; click “Get” to get current power of module. Select “Save” to save output power in module as Pic.5-1.



Pic.5-1

5.2 Region

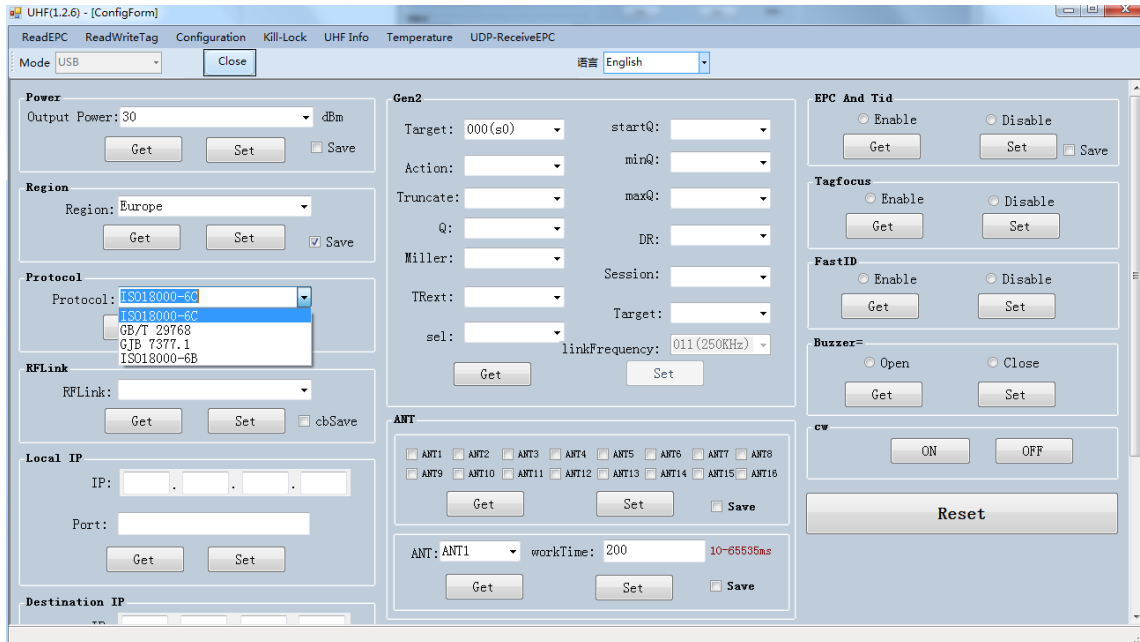
User could select UHF frequency band of multiple countries, click “Set” to confirm to setup frequency band, select “Save” to save current settings in module as Pic.5-2.



Pic.5-2

5.3 Protocol

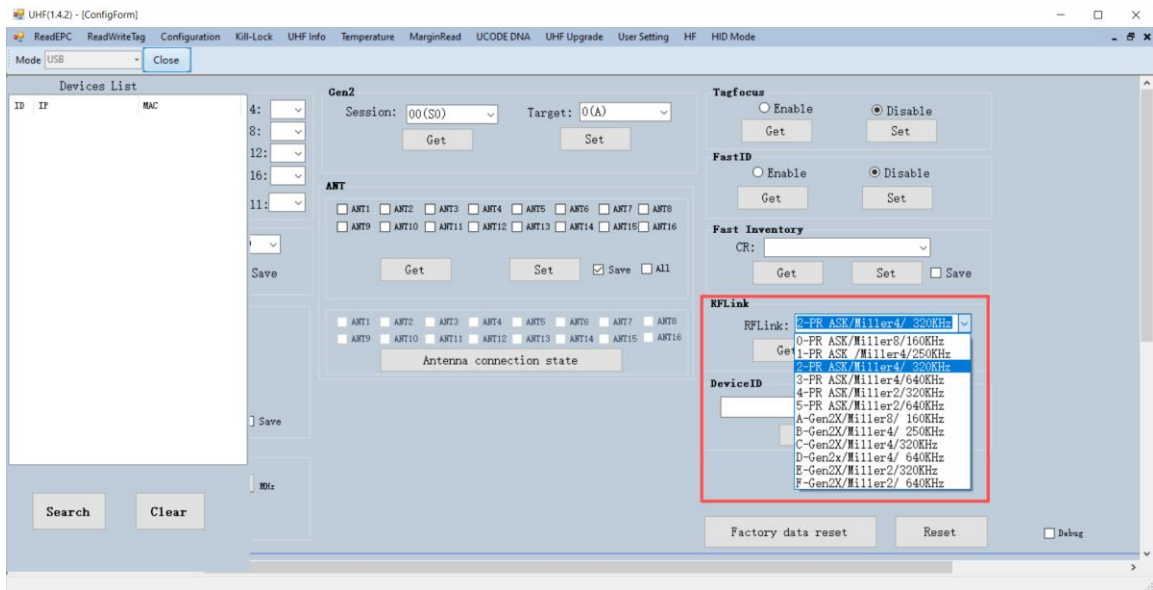
User could select 4 protocols, click “Set” to setup protocol and click “Get” to check current protocol of module as Pic.5-3.



Pic.5-3

5.4 RFLink

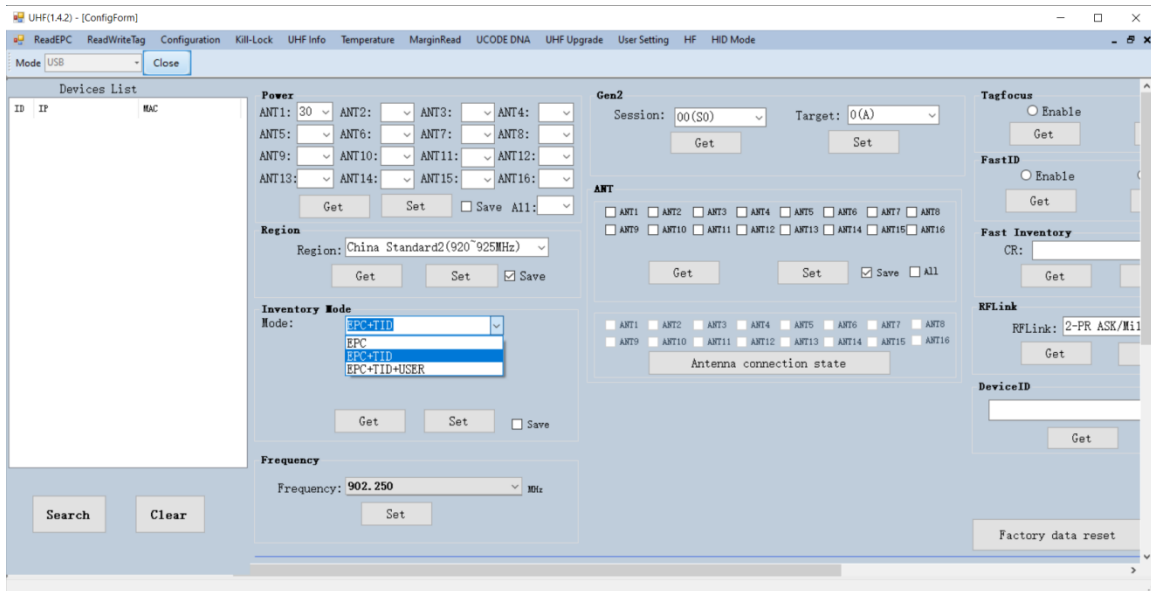
User could select 4 RF links, click “Set” to confirm setup RF link, click “Get” to check current RF link setup.



Pic.5-4

5.5 Inventory Mode

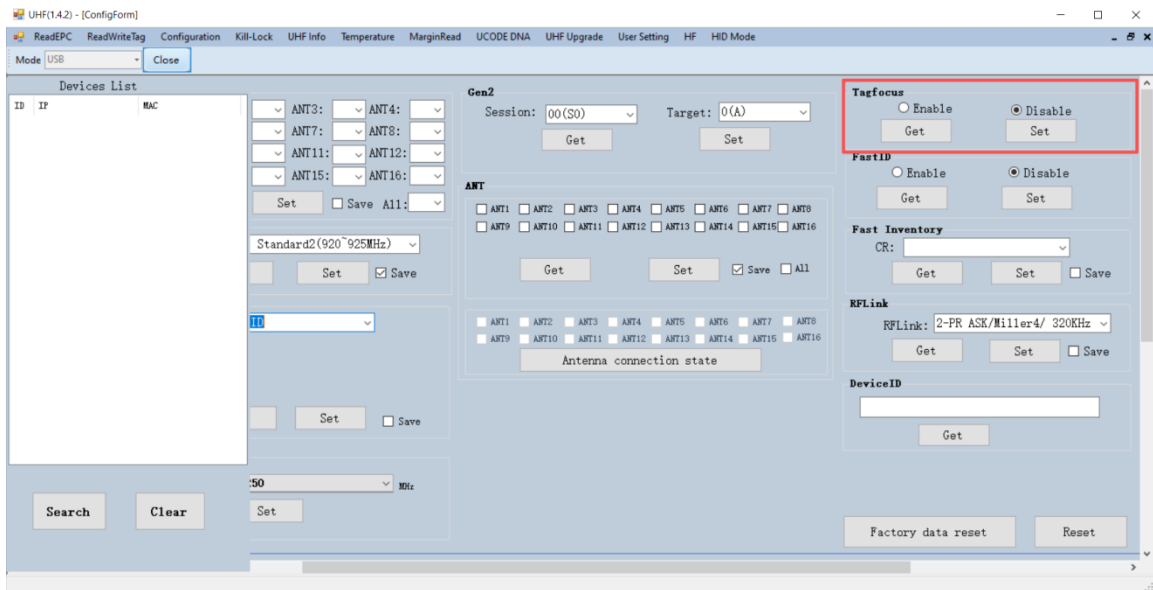
Select the appropriate options in “Inventory mode” so that you can retrieve the desired data combination when performing inventory operations. Click “Get” to check current status as Pic.5-5.



Pic.5-5

5.6 Tag Focus

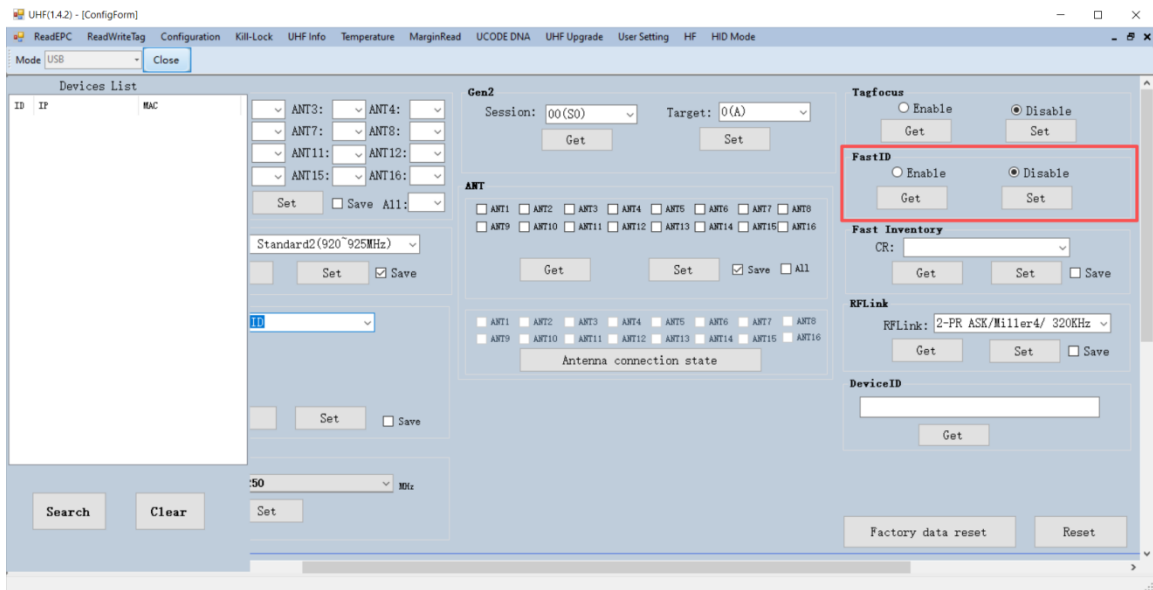
Select “Enable” or “Disable” and click “Set” to enable or disable TagFocus mode. Click “Get” to check current status as Pic.5-6.



Pic.5-6

5.7 Fast ID

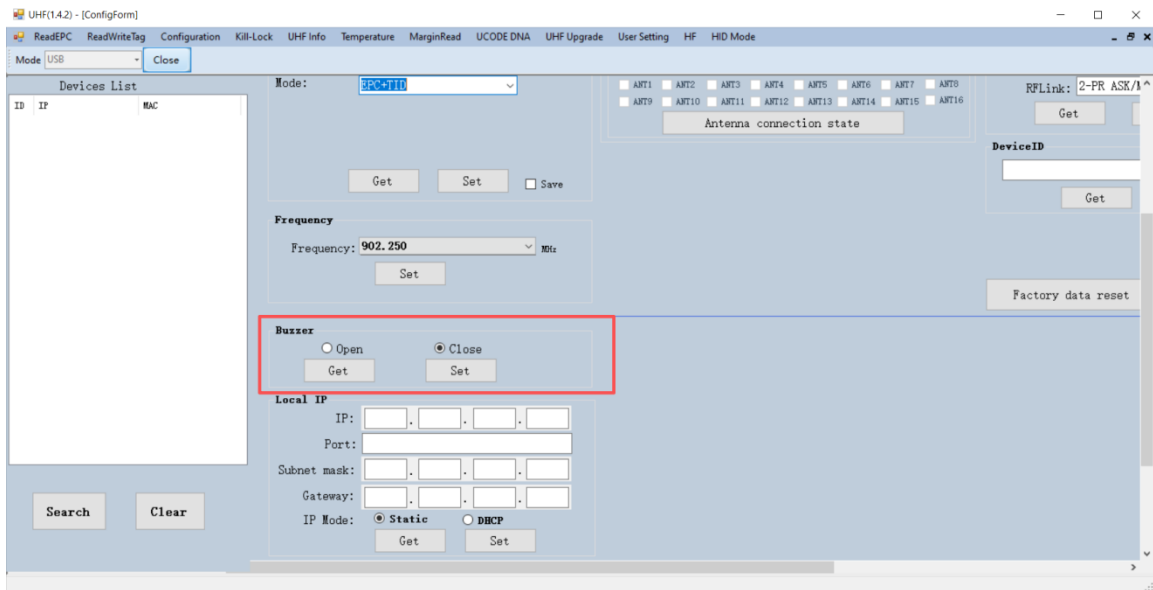
Select “Enable” or “Disable” and click “Set” to enable or disable FastID mode. Click “Get” to check current status as Pic.5-7.



Pic.5-7

5.8 Buzzer

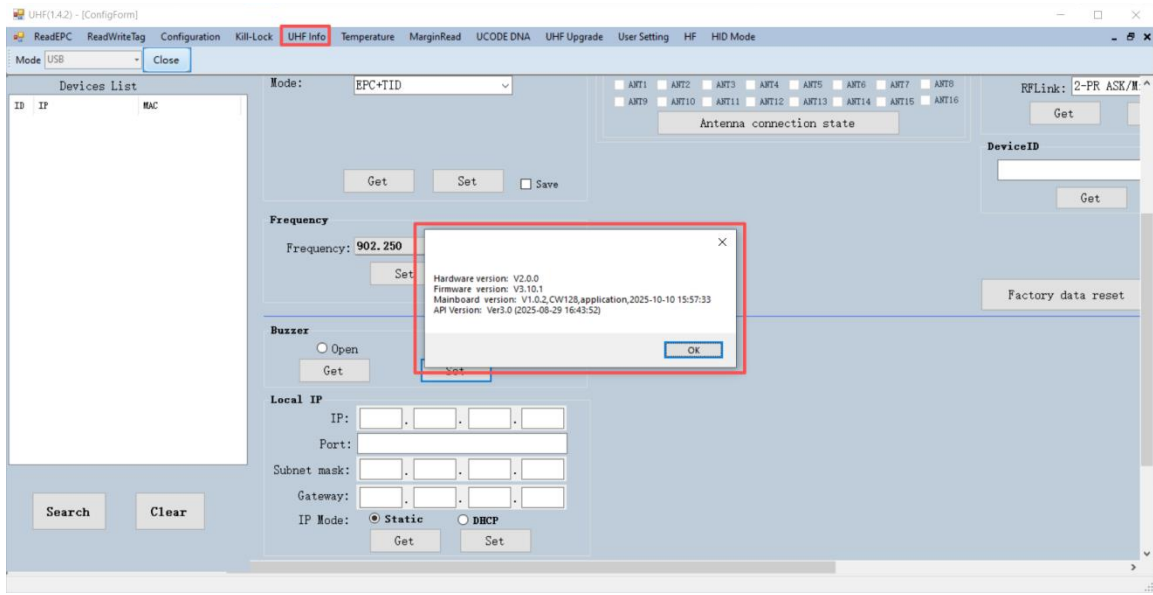
Select “Enable” or “Disable” and click “Set” to enable or disable buzzer. Click “Get” to check current status as Pic.5-8.



Pic.5-8

5.6 UHF Info

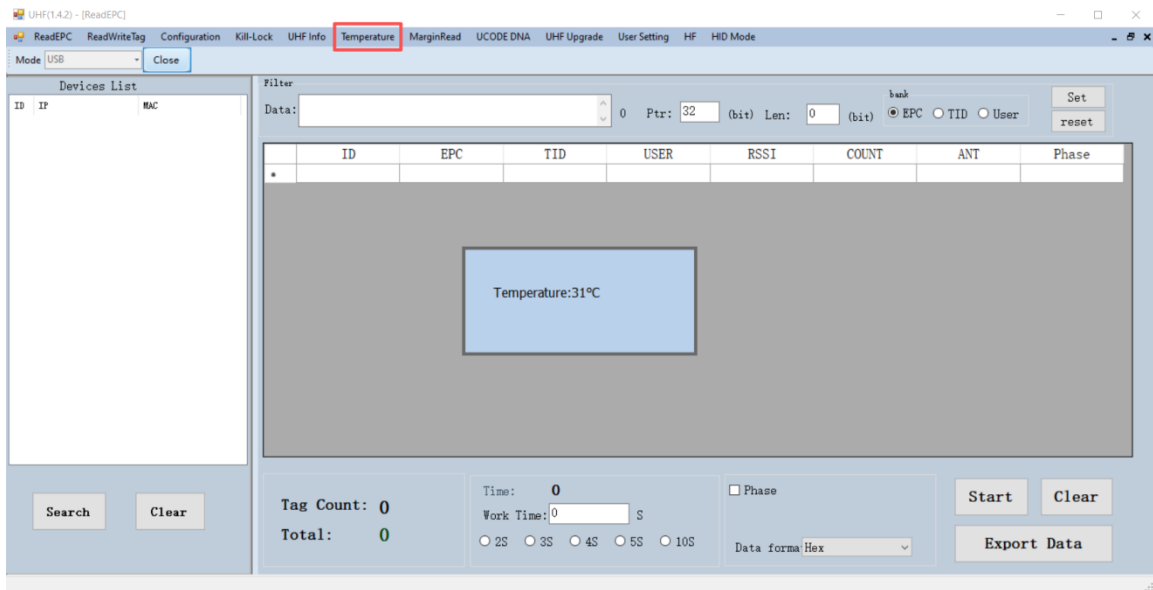
Click “UHF Info” on top of navigation bar to check hardware version and firmware version as Pic.5-6.



Pic.5-6

5.7 Temperature

Click “Temperature” on top of navigation bar to check current temperature value of module as Pic.5-7.



Pic.5-7